

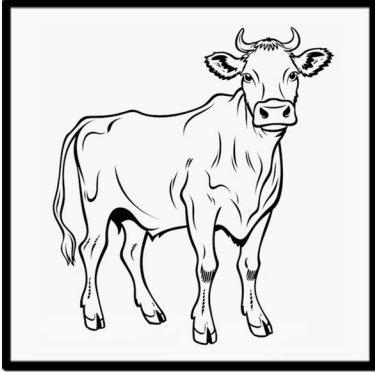
The Reading Wizards



Lesson 47A - The two sounds of OW

Directions: Circle the word that matches the picture.

1.



slow
flower
down
cow

4.



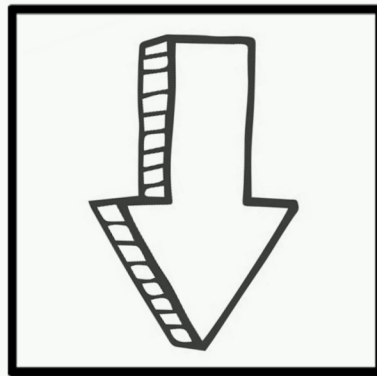
down
slow
crow
snow

2.



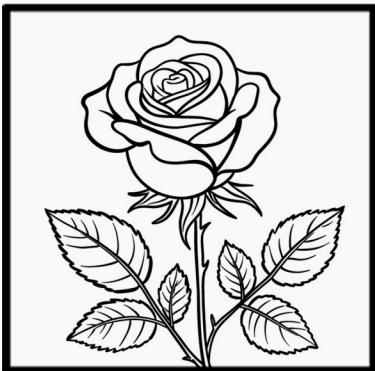
slow
flower
down
cow

5.



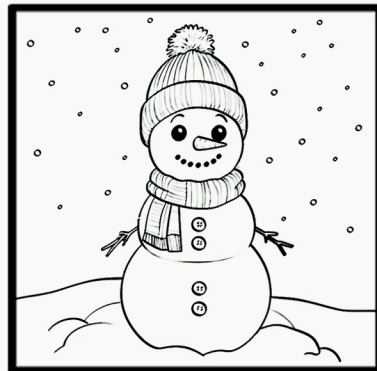
down
slow
crow
snow

3.



slow
flower
down
cow

6.



down
slow
crow
snow

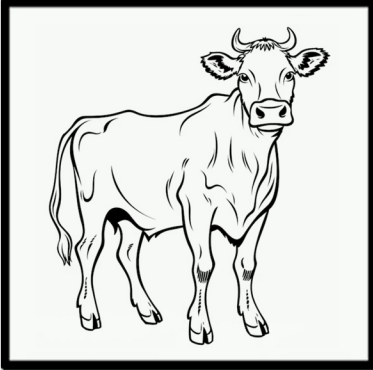
The Reading Wizards



Lesson 47A - The two sounds of OW

Directions: Draw a line from the picture to the correct word.

1.

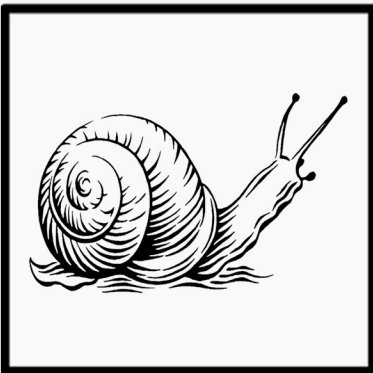


flower

4.

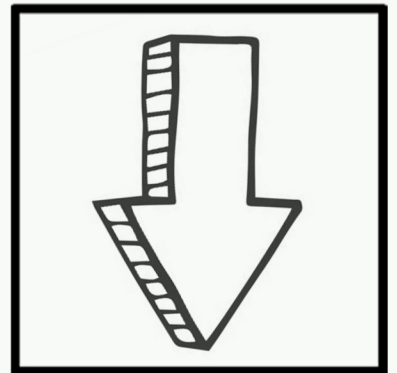


2.

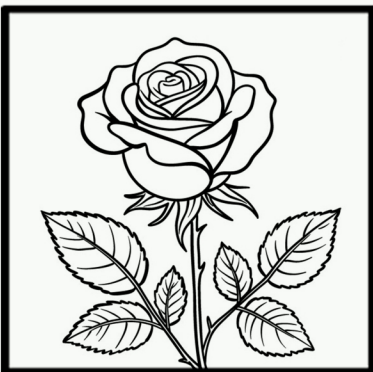


COW

5.

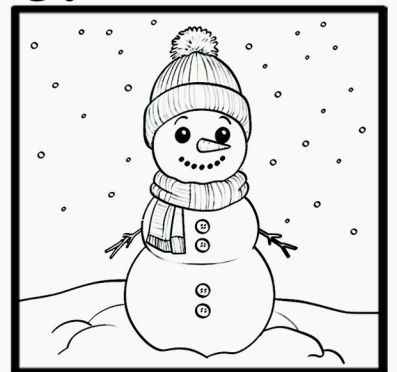


3.



crow

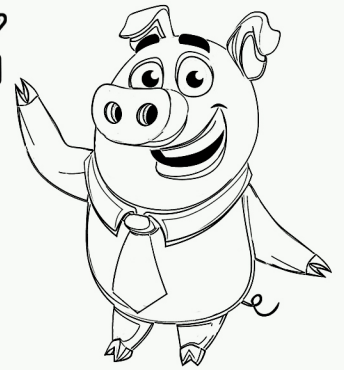
6.



down

slow

The Reading Wizards

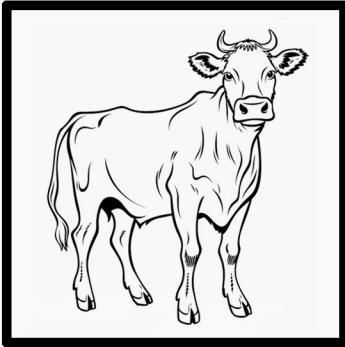


Lesson 47A - The two sounds of OW

Directions: Write the word on the line that matches the picture.
You can use the words in the box to help you with spelling.

flower crow down snow cow slow

1.



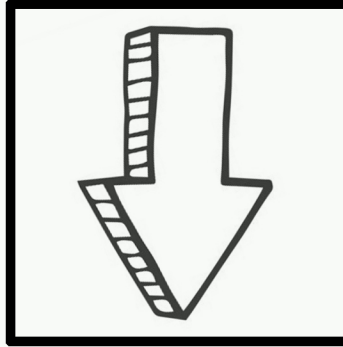
4.



2.



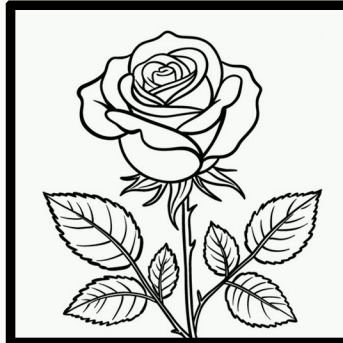
5.



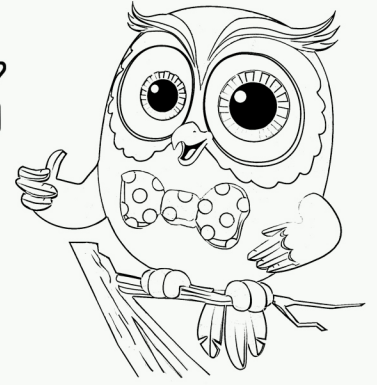
3.



6.



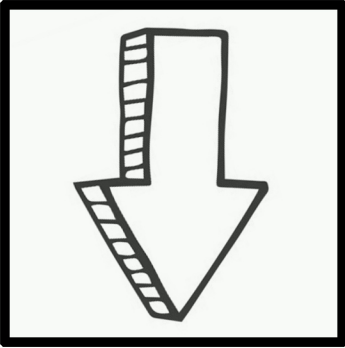
The Reading Wizards



Lesson 47A - The two sounds of OW

Directions: Unscramble each word that matches the picture.

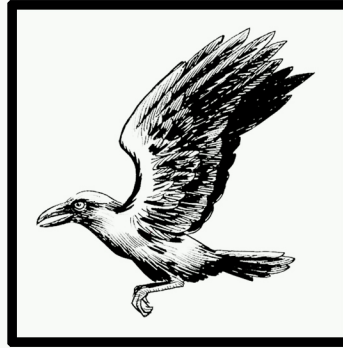
1.



n d w o

— — — —

4.



r w o c

— — — —

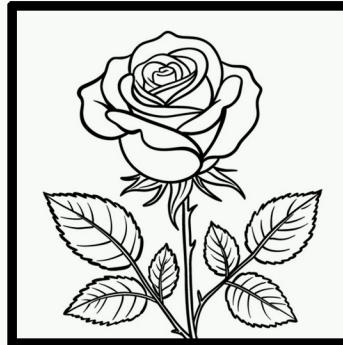
2.



o s w l

— — — —

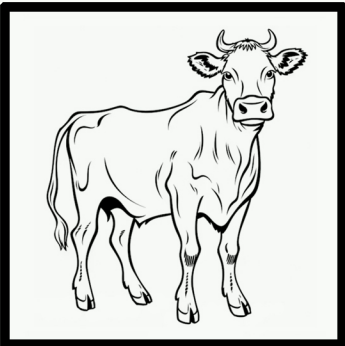
5.



e l w o f r

— — — —

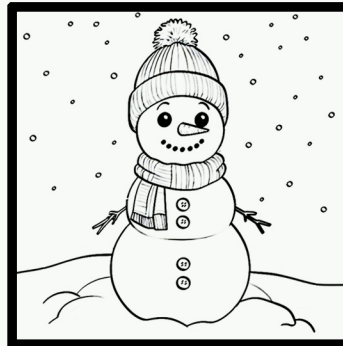
3.



w o c

— — — —

6.



w o s n

— — — —

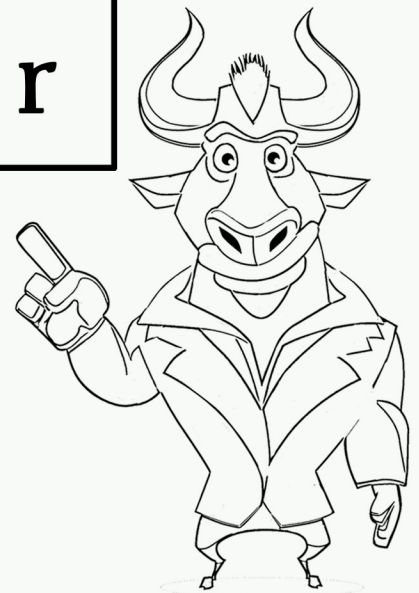
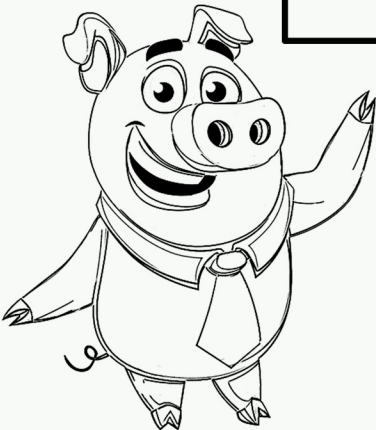
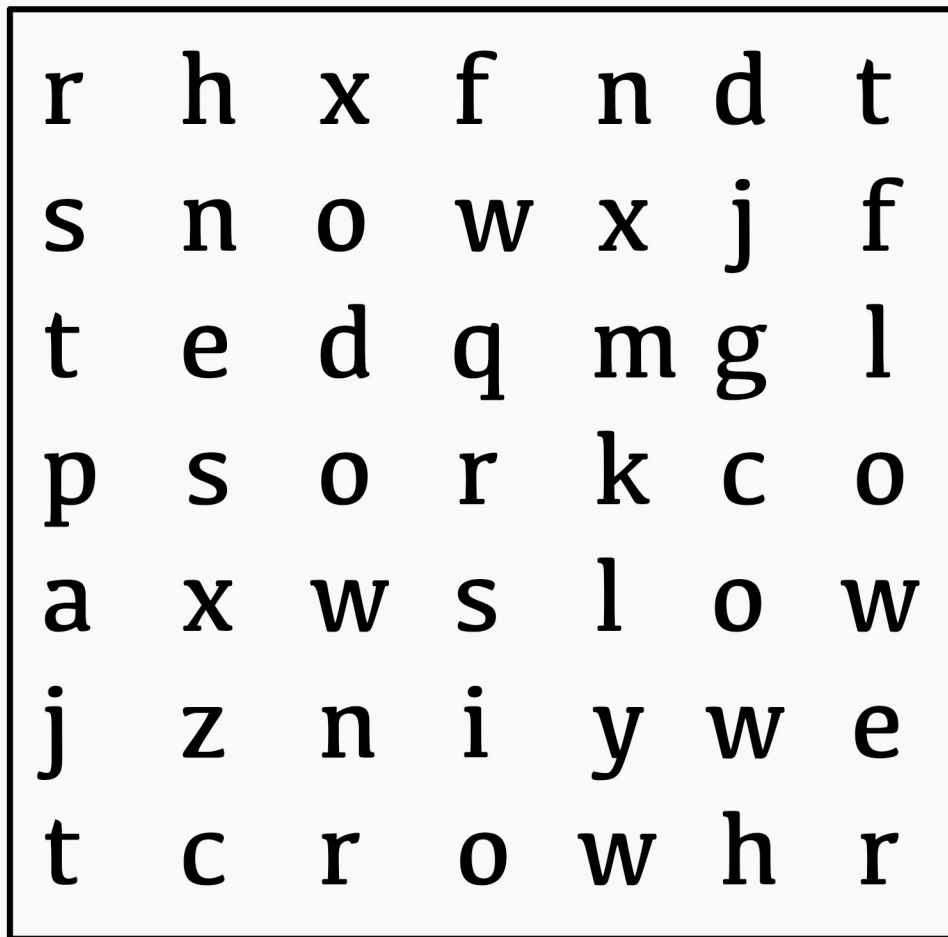
The Reading Wizards



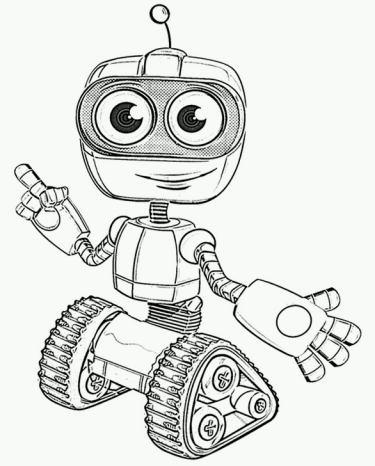
Lesson 47A - The two sounds of OW

Directions: Circle the words in the puzzle that match the list of words below.

flower crow down snow cow slow



The Reading Wizards

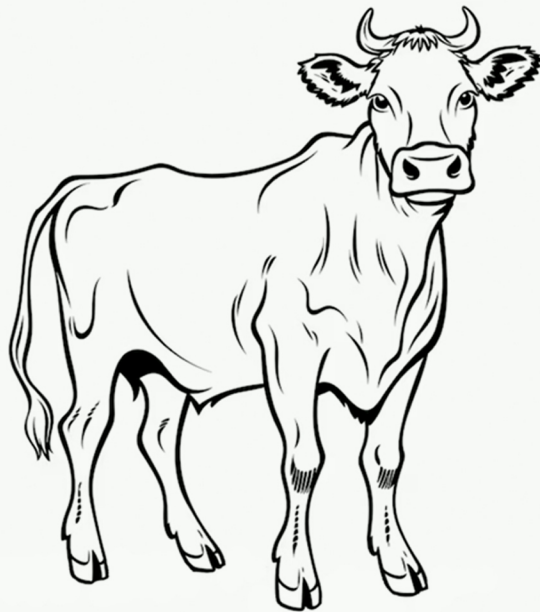


Lesson 47A - Sentences.

Directions: Unscramble the words so that the sentences make sense.

1. coming The down. is snow

2. cow. The sees crow a



The Reading Wizards

Lesson 47A - Answer key to Wordsearch and sentences.

Wordsearch answer key:

flower crow down snow cow slow

r	h	x	f	n	d	t
s	n	o	w	x	j	f
t	e	d	q	m	g	l
p	s	o	r	k	c	o
a	x	w	s	l	o	w
j	z	n	i	y	w	e
t	c	r	o	w	h	r

Sentences answer key:

1. The snow is coming down.
2. The crow sees a cow.