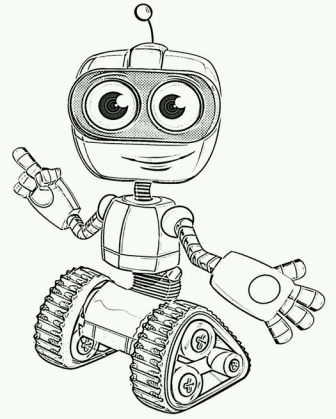


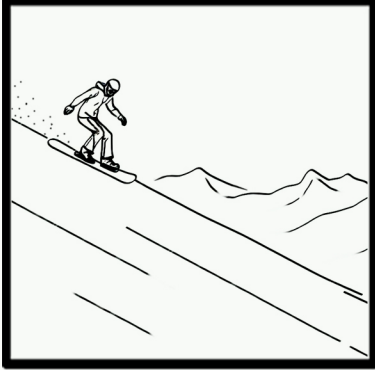
# The Reading Wizards



## Lesson 33B - Short and Long O words with silent E

Directions: Circle the word that matches the picture.

1.



rob  
note  
hop  
slope

4.



robe  
cop  
note  
hop

2.



rob  
note  
hop  
slope

5.



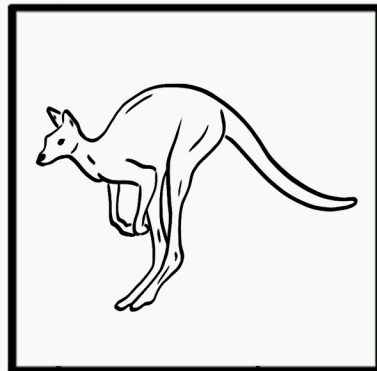
robe  
cop  
note  
hop

3.



rob  
note  
hop  
slope

6.



robe  
cop  
note  
hop

# The Reading Wizards



## Lesson 33B - Short and Long O words with silent E

Directions: Draw a line from the picture to the correct word.

1.



note

hop

4.



2.



slope

cop

5.



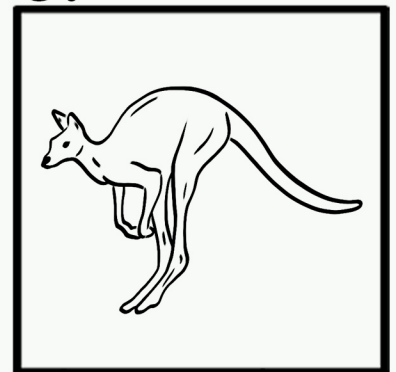
robe

rob

3.



6.



# The Reading Wizards

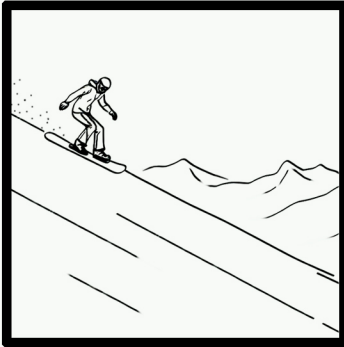


## Lesson 33B - Short and Long O words with silent E

Directions: Write the word on the line that matches the picture.  
You can use the words in the box to help you with spelling.

cop note rob slope hop robe

1.



\_\_\_\_\_

-----

\_\_\_\_\_

4.



\_\_\_\_\_

-----

\_\_\_\_\_

2.



\_\_\_\_\_

-----

\_\_\_\_\_

5.



\_\_\_\_\_

-----

\_\_\_\_\_

3.

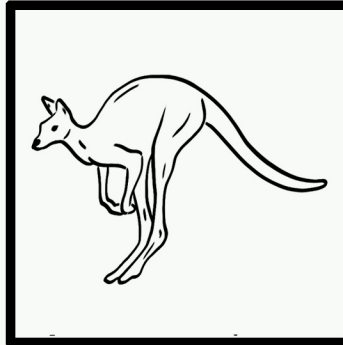


\_\_\_\_\_

-----

\_\_\_\_\_

6.



\_\_\_\_\_

-----

\_\_\_\_\_

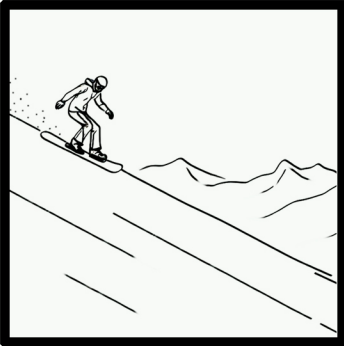
# The Reading Wizards



## Lesson 33B - Short and Long O words with silent E

Directions: Unscramble each word that matches the picture.

1.



o p s e l

-----

4.



o p c

-----

2.



b o r

-----

5.



o b r e

-----

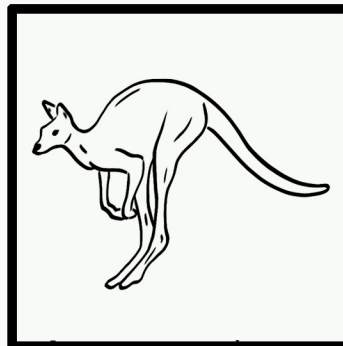
3.



o t n e

-----

6.



p h o

-----

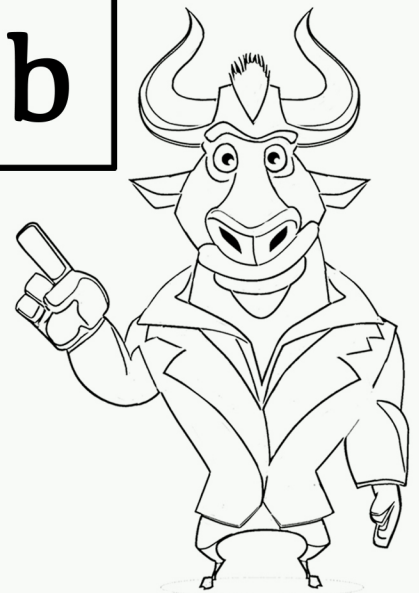
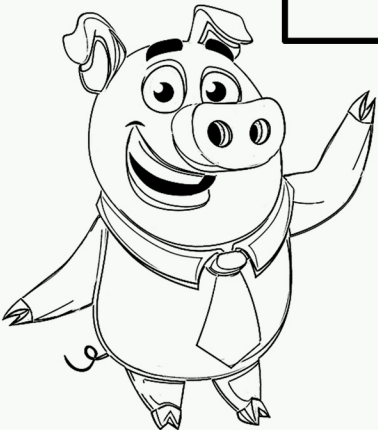
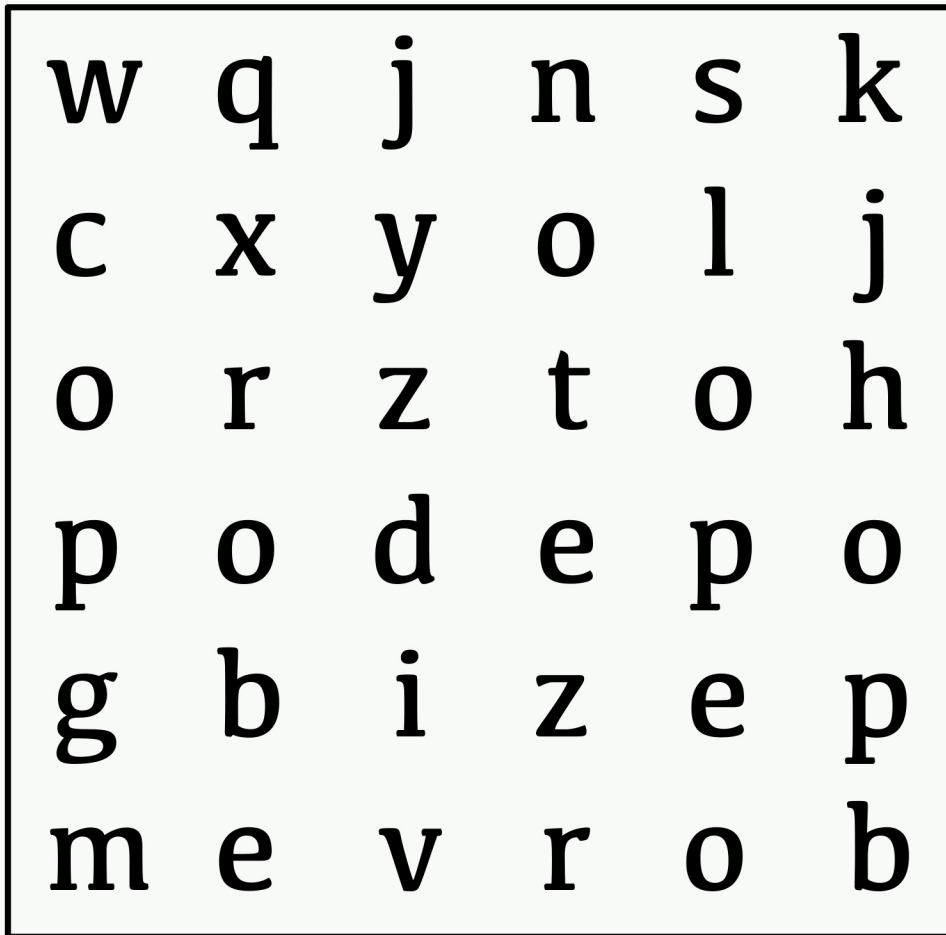
# The Reading Wizards



## Lesson 33B - Short and Long O words with silent E

Directions: Circle the words in the puzzle that match the list of words below.

cop note rob slope hop robe



# The Reading Wizards



## Lesson 33B - Sentences.

Directions: Unscramble the words so that the sentences make sense.

1. note. is the not That

\_\_\_\_\_

-----

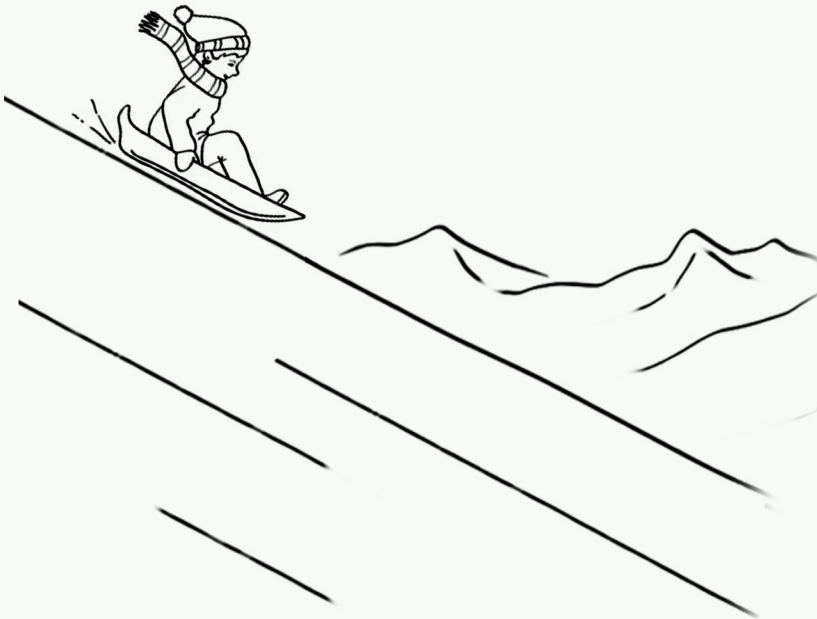
\_\_\_\_\_

2. on slope. the rode Tad sled his

\_\_\_\_\_

-----

\_\_\_\_\_

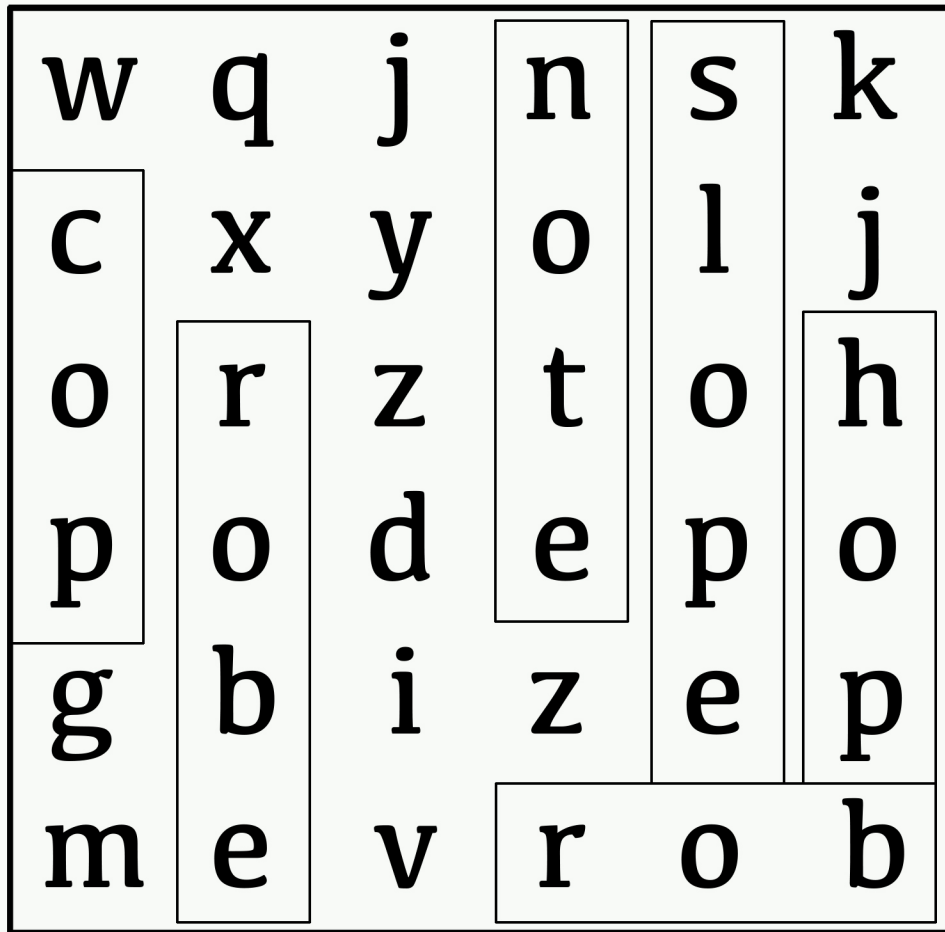


# The Reading Wizards

Lesson 33B - Answer key to Wordsearch and sentences.

Wordsearch answer key:

**cop note rob slope hop robe**



Sentences answer key:

1. That is not the note.
2. Tad rode his sled on the slope.